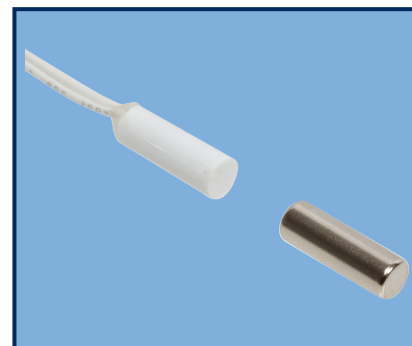


## DESCRIPTION

The N155 is a 1/4 inch diameter stubby recessed press fit wide gap switch set with a 1/4 inch X 3/4 inch bare rare earth magnet. The N155 is designed for narrow applications where drilling space is limited.

The N155 is the installer's choice of contact configuration where drill depth is a consideration and excellent air and side-to-side gaps are required to stop false alarms, caused by shifting or warping doors and windows.



## FEATURES

- Slim design
- Encapsulated hermitically sealed contacts
- Press-fit no glue required
- Wide gap - N35 NdFeB rare earth magnet
- Reduced false alarms
- Polypropylene housing
- 12 inch 22 AWG wire leads
- Listed to UL634 standard

## ORDERING INFORMATION

PART NUMBER	COLOR	OPERATE GAP (in inches)	CONTACT RATING (Max DC/Peak AC Resistive)				STATIC CONTACT RESISTANCE (50mV, 100mA)
			SWITCHING		CARRY		
			V	I	V	I	

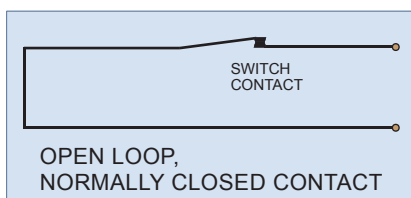
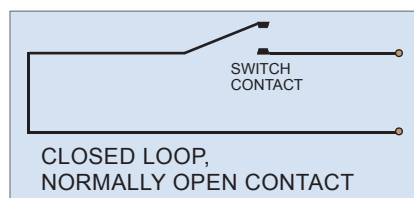
### CLOSED LOOP, NORMALLY OPEN, 1FA, SWITCH/MAGNET SET:

N155B/ST N155G/ST N155W/ST	BROWN GREY WHIITE	0.75 to 1.25	200 VDC	0.5 Amps	10vA	1.5 Amps	150 mOhms
----------------------------------	-------------------------	--------------	---------	----------	------	----------	-----------

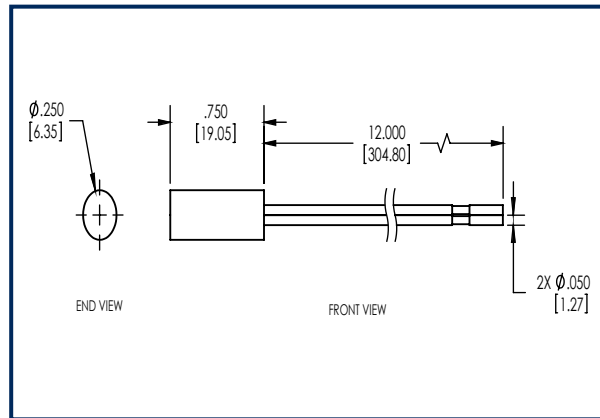
### OPEN LOOP, NORMALLY CLOSED, 1FB, SWITCH/MAGNET SET:

N155B/STFB N155G/STFB N155W/STFB	BROWN GREY WHIITE	0.65 to 1.25	30 VDC	0.2 Amps	3vA	0.5 Amps	150 mOhms
--	-------------------------	--------------	--------	----------	-----	----------	-----------

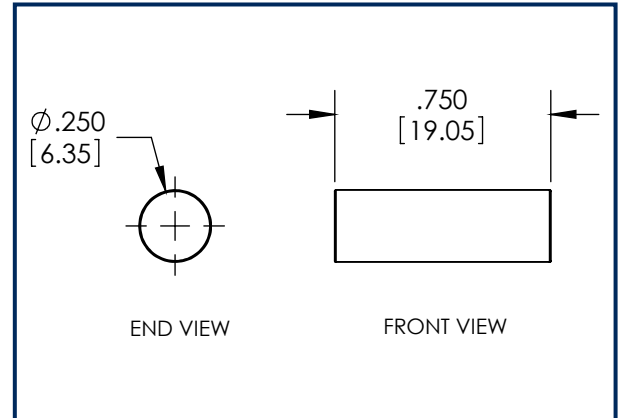
## WIRING SCHEMATIC



## DIMENSIONS - IN [mm]



**SWITCH**



**MAGNET**

## INSTALLATION INSTRUCTIONS

- Mark the desired location for the switch and magnet on the top edge of the door and door frame making sure your marks are in alignment.
- Using a square, transfer the marks on to the top edge of the door and the opposing door frame.
- Using a tape measure or graduations on the square, locate the center of the door edge and place an intersecting line with the first mark. Drill a 1/4" hole at the location where the marks intersect.
- Repeat the above step to locate the hole position for the switch in the door frame. Drill a 1/4" hole in the door frame.
- Apply adhesive or RTV to the end of the magnet and press the magnet into the hole you drilled in the door until flush with top edge of door.
- Connect the switch leads to the alarm system. **Caution!** Hold wire leads, not the switch housing while cutting and stripping to prevent damage to switch.
- Insert wire leads into hole followed by the switch and press the switch into the hole until the head is flush with the door frame.
- Test system for correct operation.

## PART NUMBER SYSTEM

