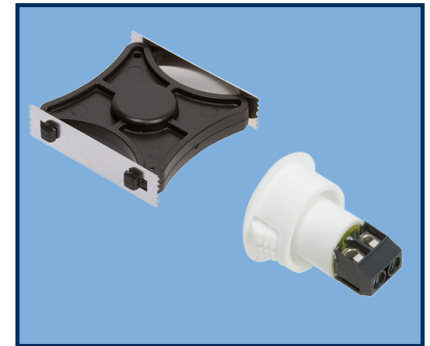


DESCRIPTION

Nascom's N1178T SHK Series is a 3/4" recessed stubby door contact couple with the patented SHARK™ magnet. The set is designed for residential, commercial and industrial steel and wood door applications.

The N1178T SHK is the installer's choice of contact configuration because the contact set is designed to cut installation times .. just a pinch of the springs installs the SHARK™ magnet permanently and the powerful rare earth magnet helps to prevent false alarms caused by shifting or warping doors.

The N1178T SHK Series is designed for installation in every type of hinged door including wood doors.



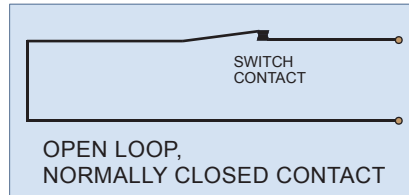
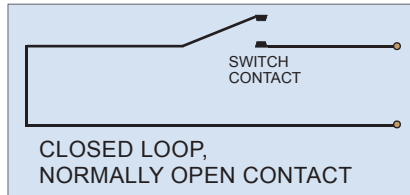
FEATURES

- SNAP FIT ON STEEL - NO GLUE REQUIRED
- TIME SAVING INSTALLATION
- SCREW TERMINALS
- WIDE GAP - N35 NdFeB RARE EARTH MAGNET
- ENCAPSULATED HERMETICALLY SEALED CONTACTS
- NO SILICONE REQUIRED FOR MAGNET INSTALL
- POLYPROPYLENE SWITCH HOUSING
- LISTED TO UL634 STANDARD

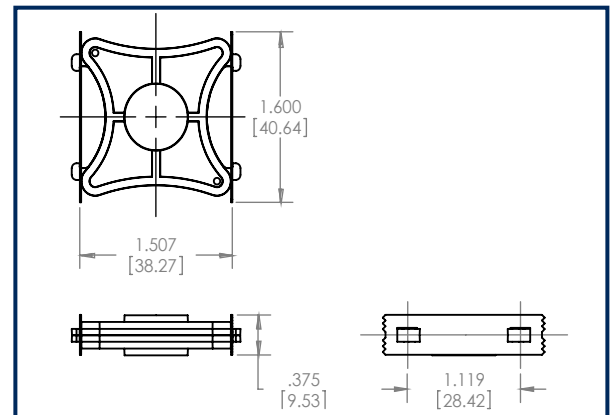
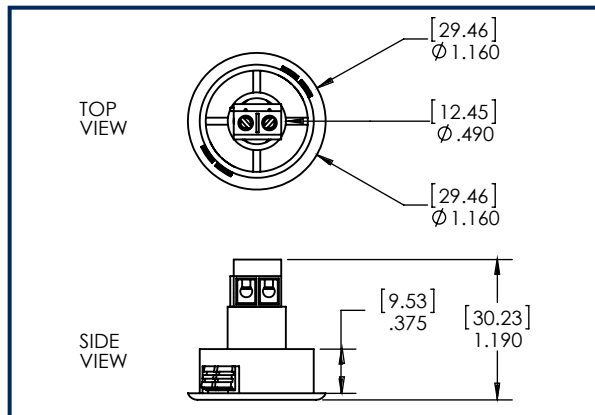
ORDERING INFORMATION

PART NUMBER	COLOR	OPERATE GAP (in inches)	CONTACT RATING (Max DC/Peak AC Resistive)				STATIC CONTACT RESISTANCE (50mV, 100mA)
			SWITCHING		CARRY		
			V	I	V	I	
CLOSED LOOP, NORMALLY OPEN, 1FA, SWITCH/MAGNET SET:							
N1178TBSHK/ST N1178TGSHK/ST N1178TTSHK/ST N1178TWSHK/ST	BROWN GREY TAN WHITE	0.75 to 1.25	200 VDC	0.5 Amps	10vA	1.5 Amps	150 mOhms
OPEN LOOP, NORMALLY CLOSED, 1FB, SWITCH/MAGNET SET:							
N1178TBSHK/STFB N1178TGSHK/STFB N1178TTSHK/STFB N1178TWSHK/STFB	BROWN GREY TAN WHITE	0.75 to 1.25	30 VDC	0.2 Amps	3vA	0.5 Amps	150 mOhms
HIGH SECURITY, NORMALLY OPEN, 1FA, SWITCH/MAGNET SET:							
N1178TBSHK/STHS N1178TGSHK/STHS N1178TTSHK/STHS N1178TWSHK/STHS	BROWN GREY TAN WHITE	0.1875 to 0.5000	300 VDC	0.25 Amps	10vA	0.25 Amps	150 mOhms initial

WIRING SCHEMATIC



DIMENSIONS - IN [mm]



INSTALLATION INSTRUCTIONS

- Mark location for the switch on the door frame.
- Drill a hole for the switch using a 1" Hole Saw for steel doors or a Forstner bit for wood doors.
- Connect the switch terminals to the alarm circuit conductors. Insert wire leads into hole followed by the switch and press the switch into the hole until the head is flush with the door frame.
- Test switch for correct operation and make sure gap performance is acceptable.
- Place a mark on the top edge of the door aligned with the center of the switch.
- Press the springs inward on the sides of magnet.
- Insert the magnet in u-channel in the top of the door centered with the alignment mark.
- Release the springs to secure the magnet and complete the installation.

PART NUMBERING SYSTEM

