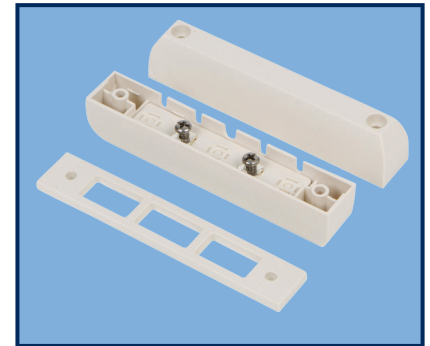


DESCRIPTION

Nascom's N400T 4 inch industrial surface mount screw terminal contacts protects steel doors in commercial settings.

The N400T is the installer's choice of contact configuration where extra wide air and side-to-side gap are required to prevent false alarms caused by shifting or warping doors and windows. The 400T is offer extreme flexibility for installation with four possible wire directions, including the bottom.



FEATURES

- ENCAPSULATED HERMETICALLY SEALED CONTACTS
- ABS HOUSING
- EXTRA WIDE GAP - N35 NdFeB RARE EARTH MAGNET
- SPACER FOR STEEL DOOR INSTALLS
- SCREW TERMINALS
- LISTED TO UL634 STANDARD

ORDERING INFORMATION

PART NUMBER	COLOR	OPERATE GAP (in inches)	CONTACT RATING (Max DC/Peak AC Resistive)				STATIC CONTACT RESISTANCE (50mV, 100mA)
			SWITCHING		CARRY		
			V	I	V	I	

CLOSED LOOP, NORMALLY OPEN, 1FA, SWITCH/MAGNET SET:

N400TB/ST N400TG/ST N400TT/ST N400TW/ST	BROWN GREY TAN WHITE	1.50 to 2.50	200 VDC	0.5 Amps	10vA	1.5 Amps	150 mOhms
--	-------------------------------	--------------	---------	----------	------	----------	-----------

DUAL CLOSED LOOP, NORMALLY OPEN, 1FA, SWITCH/MAGNET SET:

N400TB/ST2CR N400TG/ST2CR N400TT/ST2CR N400TW/ST2CR	BROWN GREY TAN WHITE	1.50 to 2.50	200 VDC	0.5 Amps	10vA	1.5 Amps	150 mOhms
--	-------------------------------	--------------	---------	----------	------	----------	-----------

OPEN LOOP, NORMALLY CLOSED, 1FB, SWITCH/MAGNET SET:

N400TB/STFB N400TG/STFB N400TT/STFB N400TW/STFB	BROWN GREY TAN WHITE	1.25 to 2.25	30 VDC	0.2 Amps	3vA	0.5 Amps	150 mOhms
--	-------------------------------	--------------	--------	----------	-----	----------	-----------

SINGLE POLE, DOUBLE THROW SWITCH/MAGNET SET:

N400TB/STSD N400TG/STSD N400TT/STSD N400TW/STSD	BROWN GREY TAN WHITE	1.25 to 2.25	30 VDC	0.2 Amps	3vA	0.5 Amps	150 mOhms
--	-------------------------------	--------------	--------	----------	-----	----------	-----------

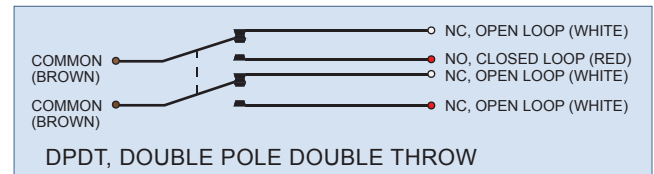
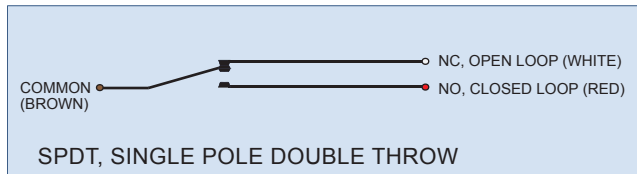
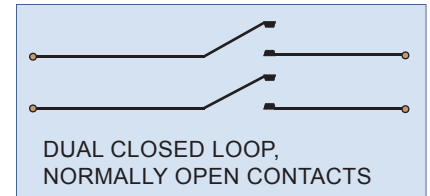
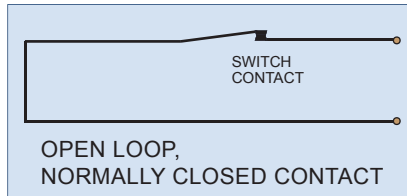
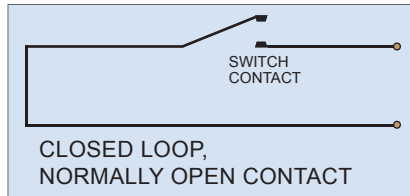
DOUBLE POLE, DOUBLE THROW SWITCH/MAGNET SET:

N400TB/STDD N400TG/STDD N400TT/STDD N400TW/STDD	BROWN GREY TAN WHITE	1.25 to 2.25	30 VDC	0.2 Amps	3vA	0.5 Amps	150 mOhms
--	-------------------------------	--------------	--------	----------	-----	----------	-----------

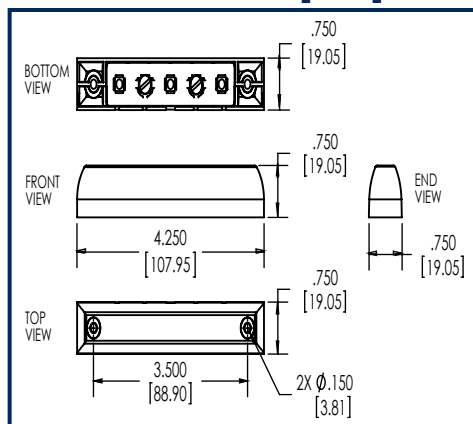
HIGH SECURITY, NORMALLY OPEN, 1FA, SWITCH/MAGNET SET:

N400TB/STHS N400TG/STHS N400TT/STHS N400TW/STHS	BROWN GREY TAN WHITE	0.1875 to .050	300 VDC	0.25 Amps	10vA	0.25 Amps	150 mOhms initial
--	-------------------------------	----------------	---------	-----------	------	-----------	-------------------

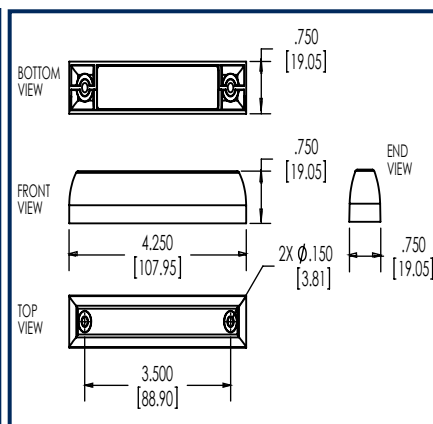
WIRING SCHEMATIC



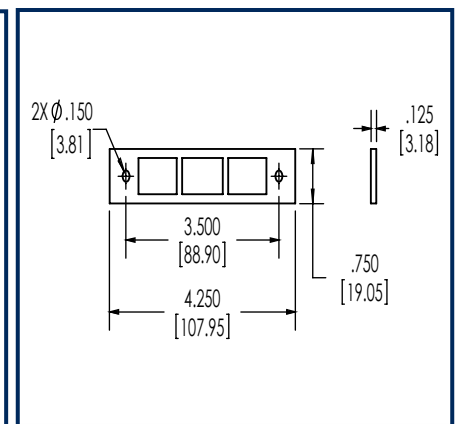
DIMENSIONS - IN [mm]



SWITCH



MAGNET



SPACER

INSTALLATION INSTRUCTIONS

Note: High Security model – Dots on switch and magnet must be aligned for correct operation.

- Position the switch on the door/window frame in the desired location as close to the movable part of the door /window as possible.
- Mark the switch mounting screw locations and drill the mounting screw holes using a drill adequately sized for #6 self-tapping screws.
- Connect the alarm circuit leads to the terminals on the switch and test the system for correct operation.
- Install screws and tighten to mount the switch on the door/window frame.
- Position the magnet on the movable part of the door/window, align the magnet with the switch as close as possible. For steel door or window applications, use the enclosed spacer under the magnet.
- Mark the magnet mounting screw locations and drill the mounting screw holes using a drill adequately sized for #6 Self-tapping screws.
- Install screws and tighten to mount the magnet on the door/window.

PART NUMBER SYSTEM

