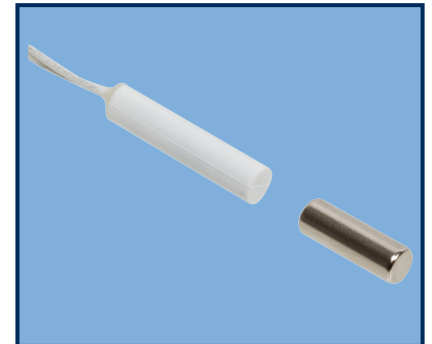


## DESCRIPTION

The N55 is a 1/4 inch diameter recessed press fit wide gap switch set with a 1/4 inch X 3/4 inch bare rare earth magnet. The N55 is designed for narrow applications where drilling space is limited.

The N55 is the installer's choice of contact configuration where excellent air and side-to-side gaps are required to stop false alarms, caused by shifting or warping doors and windows.



## FEATURES

- Slim design
- Encapsulated hermitically sealed contacts
- Press-fit no glue required
- Wide gap - N35 NdFeB rare earth magnet
- Reduced false alarms
- Polypropylene housing
- 12 inch 22 AWG wire leads
- Listed to UL634 standard

## ORDERING INFORMATION

PART NUMBER	COLOR	OPERATE GAP (in inches)	CONTACT RATING (Max DC/Peak AC Resistive)				STATIC CONTACT RESISTANCE (50mV, 100mA)
			SWITCHING		CARRY		
			V	I	V	I	

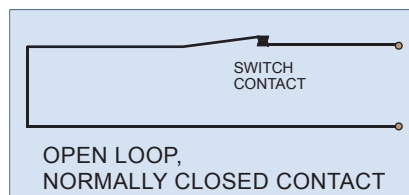
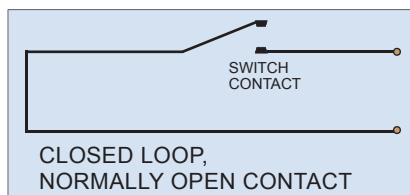
### CLOSED LOOP, NORMALLY OPEN, 1FA, SWITCH/MAGNET SET:

N55B/ST	BROWN	0.75 to 1.25	200 VDC	0.5 Amps	10vA	1.5 Amps	150 mOhms
N55G/ST	GREY						
N55W/ST	WHITE						

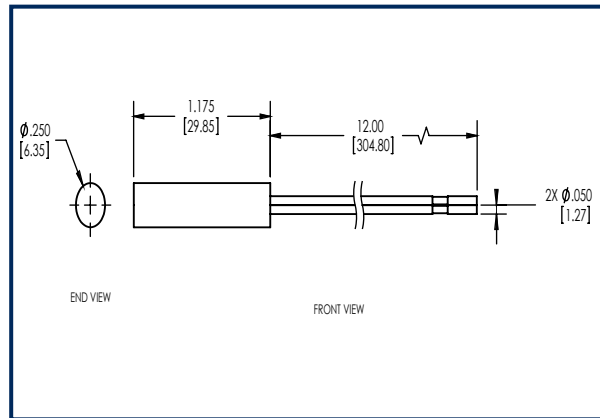
### OPEN LOOP, NORMALLY CLOSED, 1FB, SWITCH/MAGNET SET:

N55B/STFB	BROWN	0.65 to 1.25	30 VDC	0.2 Amps	3vA	0.5 Amps	150 mOhms
N55G/STFB	GREY						
N55W/STFB	WHITE						

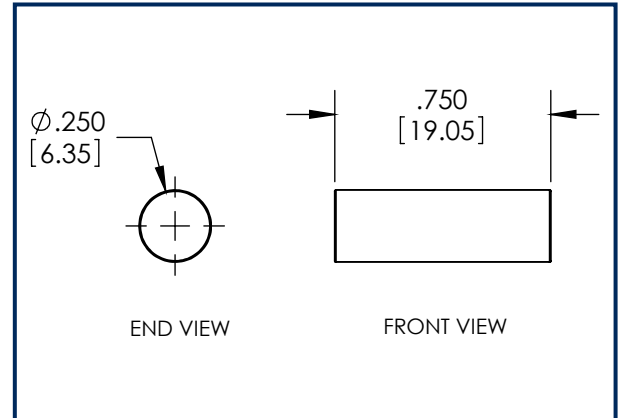
## WIRING SCHEMATIC



## DIMENSIONS - IN [mm]



**SWITCH**



**MAGNET**

## INSTALLATION INSTRUCTIONS

- Mark the desired location for the switch and magnet on the top edge of the door and door frame making sure your marks are in alignment.
- Using a square, transfer the marks on to the top edge of the door and the opposing door frame.
- Using a tape measure or graduations on the square, locate the center of the door edge and place an intersecting line with the first mark. Drill a  $\frac{1}{4}$ " hole at the location where the marks intersect.
- Repeat the above step to locate the hole position for the switch in the door frame. Drill a  $\frac{1}{4}$ " hole in the door frame.
- Apply adhesive or RTV to the end of the magnet and press the magnet into the hole you drilled in the door until flush with top edge of door.
- Connect the switch leads to the alarm system. **Caution!** Hold wire leads, not the switch housing while cutting and stripping to prevent damage to switch.
- Insert wire leads into hole followed by the switch and press the switch into the hole until the head is flush with the door frame.
- Test system for correct operation.

## PART NUMBER SYSTEM

