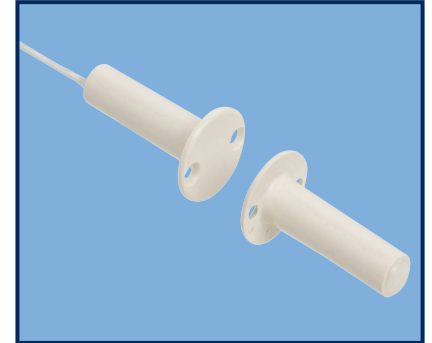


DESCRIPTION

Nascom's N72 Series standard length 3/8" recessed contact with mounting flange, protects all nonferrous (e.g. wood, aluminum and vinyl) doors and windows in both residential and commercial settings.

The N72 is the installer's choice of contact configuration where drill depth is not a concern and maximum air and side-to-side gaps are required to prevent false alarms caused by shifting or warping doors and windows.



FEATURES

- PRESS FIT - NO GLUE REQUIRED
- 12" 22AWG WIRE LEADS
- WIDE GAP - N35 NdFeB RARE EARTH MAGNET
- ENCAPSULATED HERMETICALLY SEALED CONTACTS
- ABS HOUSINGS
- LISTED TO UL634 STANDARD

ORDERING INFORMATION

PART NUMBER	COLOR	OPERATE GAP (in inches)	CONTACT RATING (Max DC/Peak AC Resistive)				STATIC CONTACT RESISTANCE (50mV, 100mA)
			SWITCHING		CARRY		
			V	I	V	I	

CLOSED LOOP, NORMALLY OPEN, 1FA, SWITCH/MAGNET SET:

N72B/ST N72G/ST N72T/ST N72W/ST	BROWN GREY TAN WHITE	0.87 to 1.3125	200 VDC	0.5 Amps	10vA	1.5 Amps	150 mOhms
--	-------------------------------	----------------	---------	----------	------	----------	-----------

DUAL CLOSED LOOP, NORMALLY OPEN, 1FA, SWITCH/MAGNET SET:

N72B/ST2CR N72G/ST2CR N72T/ST2CR N72W/ST2CR	BROWN GREY TAN WHITE	0.87 to 1.3125	200 VDC	0.5 Amps	10vA	1.5 Amps	150 mOhms
--	-------------------------------	----------------	---------	----------	------	----------	-----------

OPEN LOOP, NORMALLY CLOSED, 1FB, SWITCH/MAGNET SET:

N72B/STFB N72G/STFB N72T/STFB N72W/STFB	BROWN GREY TAN WHITE	0.625 to 1.25	30 VDC	0.2 Amps	3vA	0.5 Amps	150 mOhms
--	-------------------------------	---------------	--------	----------	-----	----------	-----------

SINGLE POLE, DOUBLE THROW, SWITCH/MAGNET SET:

N72B/STSD N72G/STSD N72T/STSD N72W/STSD	BROWN GREY TAN WHITE	0.625 to 1.25	30 VDC	0.2 Amps	3vA	0.5 Amps	150 mOhms
--	-------------------------------	---------------	--------	----------	-----	----------	-----------

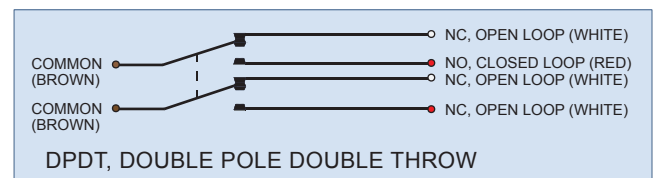
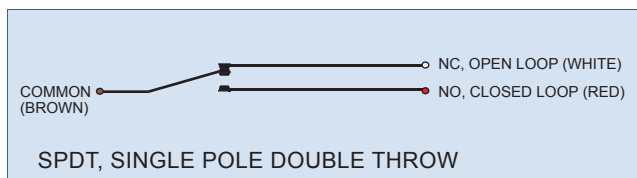
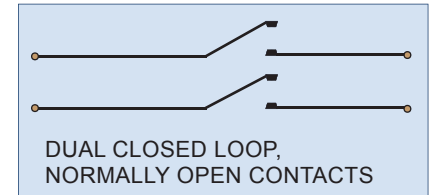
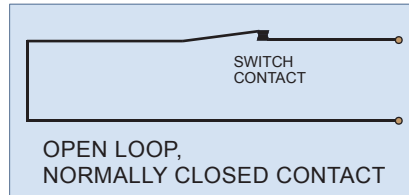
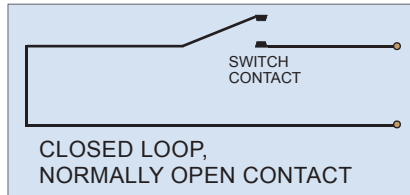
DOUBLE POLE, DOUBLE THROW, SWITCH/MAGNET SET:

N72B/STDD N72G/STDD N72T/STDD N72W/STDD	BROWN GREY TAN WHITE	0.625 to 1.25	30 VDC	0.2 Amps	3vA	0.5 Amps	150 mOhms
--	-------------------------------	---------------	--------	----------	-----	----------	-----------

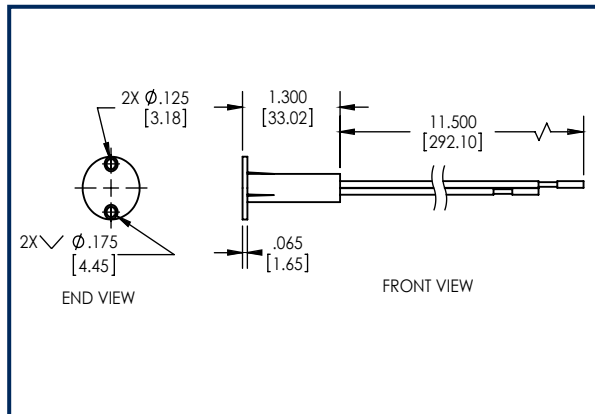
HIGH SECURITY, NORMALLY OPEN, 1FA, SWITCH/MAGNET SET:

N72B/STHS N72G/STHS N72T/STHS N72W/STHS	BROWN GREY TAN WHITE	0.25 to 0.50	300 VDC	0.25 Amps	10vA	0.25 Amps	150 mOhms initial
--	-------------------------------	--------------	---------	-----------	------	-----------	-------------------

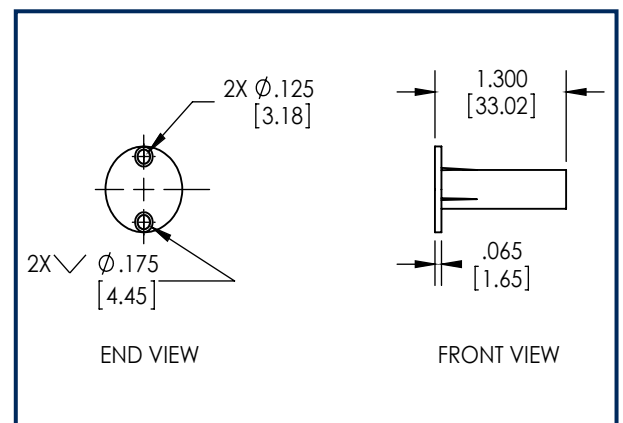
WIRING SCHEMATIC



DIMENSIONS - IN [mm]



SWITCH



MAGNET

INSTALLATION INSTRUCTIONS

- Mark location for the switch on the door frame and mark the location for the magnet on the top edge of the door.
- Make sure switch and magnet hole locations are aligned.
- Using a square, transfer the marks on to the top edge of the door and the opposing door frame.
- Using a tape measure or graduations on the square, locate the center of the door edge and place an intersecting line with the first mark. Drill a 3/8" hole at the location where the marks intersect.
- Repeat the above step to locate the hole position for the switch in the door frame. Drill a 3/8" hole in the door frame.
- Press the magnet into the hole you drilled in the door until flush with top edge of door.
- Connect the switch leads to the alarm system. **Caution! Hold wire leads, not the switch housing while cutting and stripping to prevent damage to switch.**
- Insert wire leads into hole followed by the switch and press the switch into the hole until the head is flush with the door frame.
- Secure switch and magnet housings with #4X1/2 flathead screws.
- Test switch for correct operation and make sure gap performance is acceptable.

PART NUMBER SYSTEM

