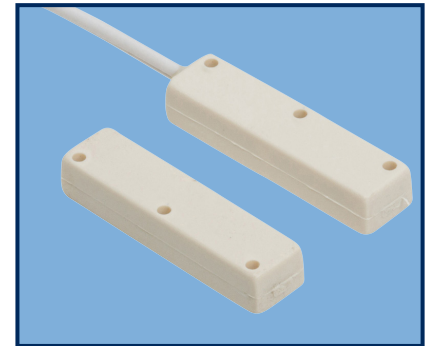


DESCRIPTION

Nascom's N90WG is an Ultra Mini surface mount stick on switch set with end leads. It comes with brad holes for mounting on wood or 3M's, VHB - Very High Bond tape. The best tape for preventing the switch and magnet from falling off the window or door. Its small size fits just about anywhere making it very versatile. Great gap & better side to side flexibility helps prevent false alarms caused by misaligned or warping doors and windows.



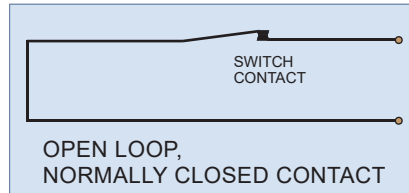
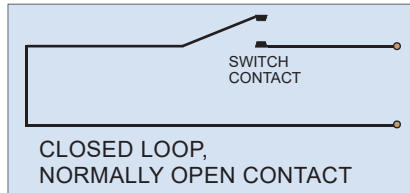
FEATURES

- * Reduces false alarms
- * Superior gap, for its size, provides stable installation
- * 3M'S best VHB tape
- * 12 inch wire leads

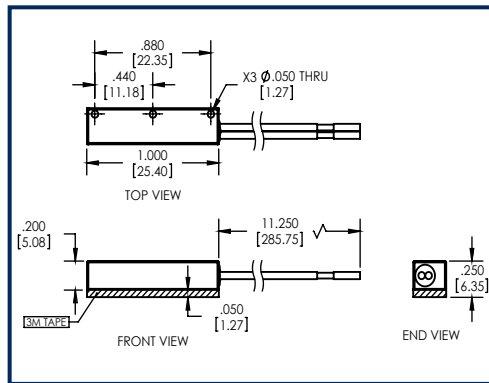
ORDERING INFORMATION

PART NUMBER	COLOR	OPERATE GAP (in inches)	CONTACT RATING (Max DC/Peak AC Resistive)				STATIC CONTACT RESISTANCE (50mV, 100mA)
			SWITCHING		CARRY		
			V	I	V	I	
CLOSED LOOP, NORMALLY OPEN, 1FA, SWITCH/MAGNET SET:							
N90WGB/ST N90WGG/ST NC90WGT/ST N90GWG/ST	BROWN GREY TAN WHIITE	0.85 to 1.20	200 VDC	0.5 Amps	10vA	1.5 Amps	150 mOhms
OPEN LOOP, NORMALLY CLOSED, 1FB, SWITCH/MAGNET SET:							
N90WGB/STFB N90WGG/STFB N90WGT/STFB N90GWG/STFB	BROWN GREY TAN WHIITE	0.65 to 1.10	200 VDC	0.2 Amps	3vA	0.5 Amps	150 mOhms
HIGH SECURITY, NORMALLY OPEN, 1FA, SWITCH/MAGNET SET:							
N90WGB/STHS N90WGG/STHS N90WGT/STHS N90GWG/STHS	BROWN GREY TAN WHIITE	0.15 to 0.35	300 VDC	0.25 Amps	10vA	0.25 Amps	150 mOhms initial

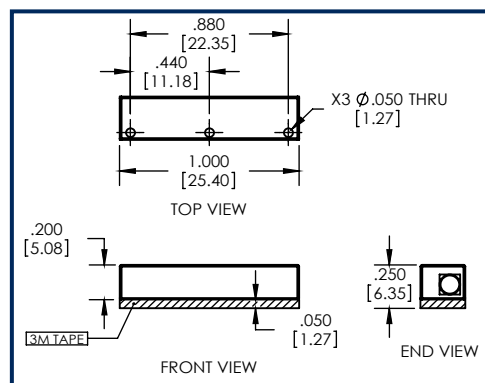
WIRING SCHEMATIC



DIMENSIONS - IN [mm]



SWITCH



MAGNET

INSTALLATION INSTRUCTIONS

- Pre-fit the switch and magnet in the desired location on the window.
- Clean the mounting surface area for both switch and magnet with alcohol and let dry.
- Remove the liner from the tape on the back of the switch and carefully position the switch on the window frame as close as possible to the movable part of the window.
- Remove the liner from the tape on the back of the magnet and carefully align the magnet parallel with the switch on the movable part of the window, as close to the window frame as possible, and aligned with the end of the switch.
- Apply firm pressure to the switch and magnet housing to ensure proper adhesion to the mounting surface.
- For wood window applications, the switch and magnet can be attached using the enclosed Brass Brads.
- Connect the switch leads to the alarm circuit. **Caution!** Hold wire leads, not the switch housing while cutting and stripping to prevent damage to switch.
- Test alarm system for correct operation.