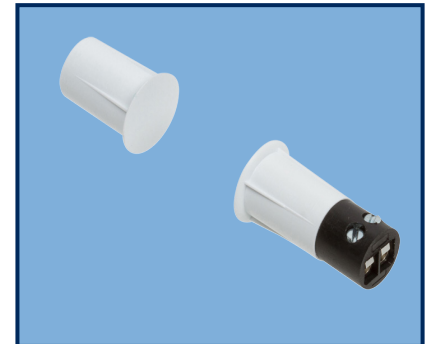


DESCRIPTION

Nascom's NC1175T UM Series, ultra mini 3/8" recessed contact with terminals, protects all nonferrous (e.g. wood, aluminum and vinyl) doors and windows, in both residential and commercial settings.

The NC1175T UM, our shortest 3/8" terminal press fit, is the installer's choice of contact configuration where drill depth is critical and excellent air and side-to-side gap are required to prevent false alarms caused by shifting or warping doors and windows.



FEATURES

- PRESS FIT - NO GLUE REQUIRED
- POLYPROPYLENE SWITCH HOUSING
- WIDE GAP - N35 NdFeB RARE EARTH MAGNET
- ENCAPSULATED HERMETICALLY SEALED CONTACTS
- LISTED TO UL634 STANDARD

ORDERING INFORMATION

PART NUMBER	COLOR	OPERATE GAP (in inches)	CONTACT RATING (Max DC/Peak AC Resistive)				STATIC CONTACT RESISTANCE (50mV, 100mA)
			SWITCHING		CARRY		
			V	I	V	I	

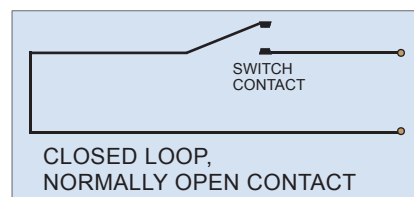
CLOSED LOOP, NORMALLY OPEN, 1FA, SWITCH/MAGNET SET:

NC1175TBUM/ST NC1175TGUM/ST NC1175TWUM/ST	BROWN GREY WHITE	0.375 to 0.875	200 VDC	0.5 Amps	10vA	1.5 Amps	150 mOhms
---	------------------------	----------------	---------	----------	------	----------	-----------

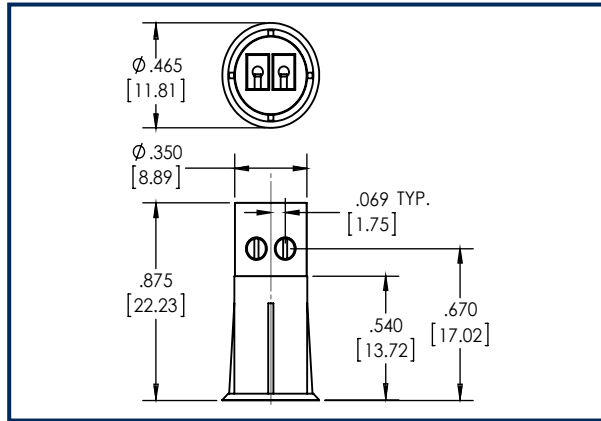
HIGH SECURITY, NORMALLY OPEN, 1FA, SWITCH/MAGNET SET:

NC1175TBUM/STHS NC1175TGUM/STHS NC1175TWUM/STHS	BROWN GREY WHITE	0.1875 to 0.50	300 VDC	0.20 Amps	3vA	0.5 Amps	150 mOhms initial
---	------------------------	----------------	---------	-----------	-----	----------	-------------------

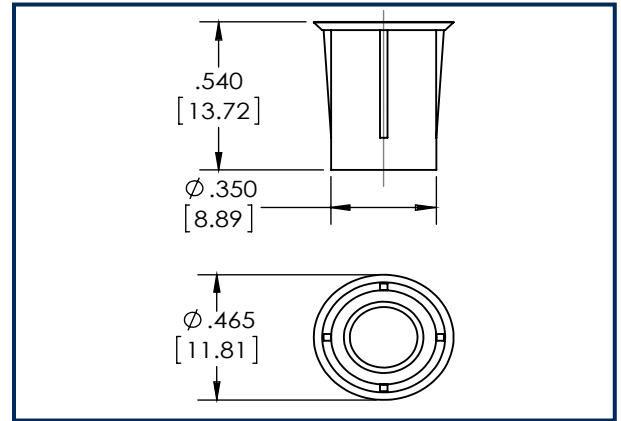
WIRING SCHEMATIC



DIMENSIONS - IN [mm]



SWITCH



MAGNET

INSTALLATION INSTRUCTIONS

- Mark location for the switch on the door frame and mark the location for the magnet on the top edge of the door.
- Make sure switch and magnet hole locations are aligned.
- Using a square, transfer the marks on to the top edge of the door and the opposing door frame.
- Using a tape measure or graduations on the square, locate the center of the door edge and place an intersecting line with the first mark. Drill a 3/8" hole at the location where the marks intersect.
- Repeat the above step to locate the hole position for the switch in the door frame. Drill a 3/8" hole in the door frame.
- Connect wire leads to screw terminal.
- Press the magnet into the hole you drilled in the door until flush with top edge of door.
- Insert wire leads into hole followed by the switch and press the switch into the hole until the head is flush with the door frame
- Test switch for correct operation and make sure gap performance is acceptable.

PART NUMBERING SYSTEM

